

Howell Grooved Butterfly Valve

Specification:

- Ductile Iron, Epoxy Coated, 1 Piece Body
- ISO 5211 Mounting Pad
- Standard 10 Position Lever Handle
- Gear Operator available
- Electric & Pneumatic actuation available
- Size Range: 2" to 14"



Standards:

End to End Dimensions to MSS SP-67
Grooved Ends to ANSI/AWWA C606
NSF/ANSI 61 and 372 approved.
ISO 5211 Mounting Pad.
CRN Registered.

How to Order:

Sample Part Number & Description

D81X4A-5 - MECH DI GROOVE BFV, DI BUNA DISC LEVER 5"

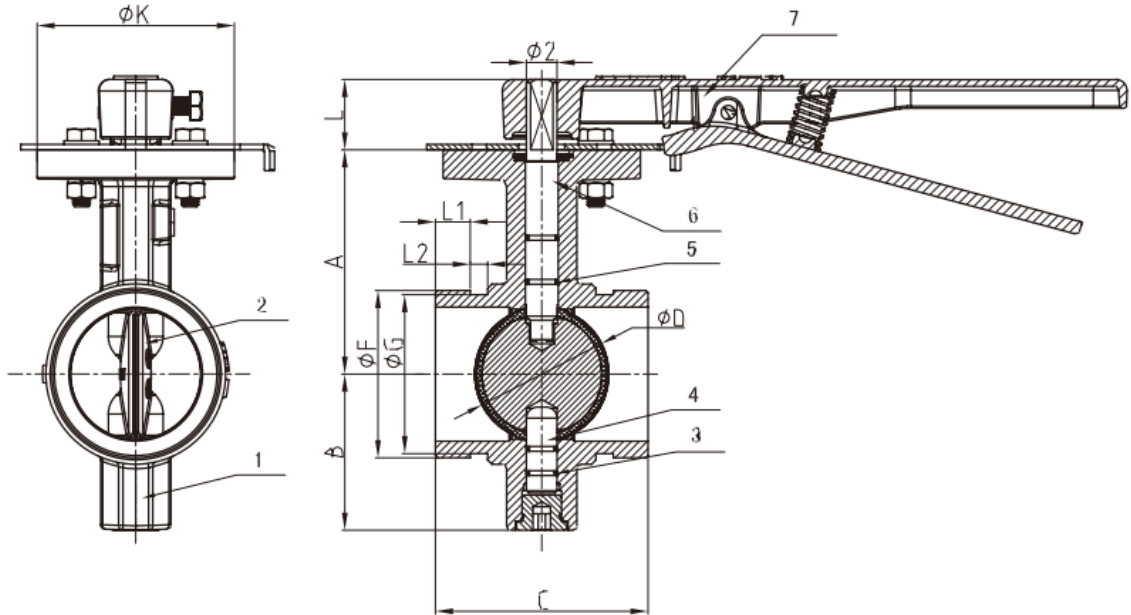
| Part 1 | Series |
|--------|--------|
| D81X4 | D81X4 |

| Part 2 | Seat |
|--------|------|
| A- | BUNA |
| - | EPDM |

Valve Rating:

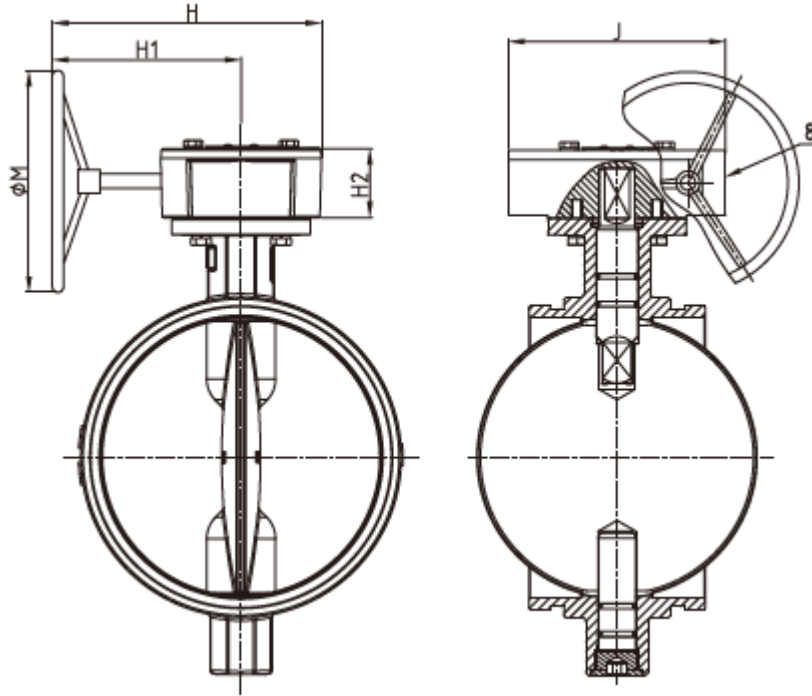
Working Pressure: 300PSI
Temperature Range: 0°C – 80°C
Coating: Fusion Bonded Epoxy
Coating in accordance with
ANSI/AWWA C550

| Part 3 | Size |
|--------|--------|
| 2 | 2" |
| 212 | 2-1/2" |
| 3 | 3" |
| 4 | 4" |
| 5 | 5" |
| 6 | 6" |
| 8 | 8" |
| 10. | 10" |
| 12. | 12" |
| 14. | 14" |



Materials List

| Item | Part | Standard Spec | Options |
|------|------------|--------------------------|----------------------------------------|
| 1 | Valve Body | ASTM A536, 65-45-12 | |
| 2 | Disc | ASTM A536, 65-45-12+EPDM | ASTM A536, 65-45-12+BUNA |
| 3 | O-Ring | BUNA | EPDM |
| 4 | Stem | Stainless Steel | AISI 304, AISI 316, AISI 420, AISI 431 |
| 5 | O-Ring | BUNA | EPDM |
| 6 | Stem | Stainless Steel | AISI 304, AISI 316, AISI 420, AISI 431 |
| 7 | Lever | ASTM A536, 65-45-12 | Aluminum |
| 8 | Signal Box | ASTM A536, 65-45-12 | |



Dimensions

| DN | | Dimensions (mm) | | | | | | | | | | | | | | | | | | |
|------|-----|-----------------|-----|-----|-------|-------|--------|-------|------|----|-----|-----|-----|----|-----|-----|------|----------|-----|-------|
| Inch | mm | A | B | C | ΦD | ΦF | ΦG | L1 | L2 | L | ΦK | H | H1 | H2 | J | ΦM | Φ2 | ISO 5211 | ΦE | N-Φ1 |
| 2 | 50 | 89 | 65 | 81 | 50.3 | 60.3 | 57.15 | 15.88 | 7.93 | 32 | 90 | 206 | 158 | 52 | 114 | 150 | 14 | F07 | 70 | 4-Φ10 |
| 2.5 | 65 | 102 | 71 | 97 | 60.8 | 73 | 69.09 | 15.88 | 7.93 | 32 | 90 | 206 | 158 | 52 | 114 | 150 | 14 | F07 | 70 | 4-Φ10 |
| 3 | 80 | 109 | 81 | 97 | 76 | 88.9 | 84.94 | 15.88 | 7.93 | 32 | 90 | 206 | 158 | 52 | 114 | 150 | 14 | F07 | 70 | 4-Φ10 |
| 4 | 100 | 128 | 95 | 116 | 98.5 | 114.3 | 110.08 | 15.88 | 9.53 | 32 | 90 | 206 | 158 | 52 | 114 | 150 | 16 | F07 | 70 | 4-Φ10 |
| 5 | 125 | 141 | 111 | 148 | 122.6 | 141.3 | 137.03 | 15.88 | 9.53 | 32 | 90 | 206 | 158 | 52 | 114 | 150 | 16 | F07 | 70 | 4-Φ10 |
| 6 | 150 | 153 | 133 | 148 | 148 | 168.3 | 163.96 | 15.88 | 9.53 | 32 | 90 | 206 | 158 | 52 | 114 | 150 | 20 | F07 | 70 | 4-Φ10 |
| 8 | 200 | 184 | 164 | 133 | 199 | 219.1 | 214.4 | 19.05 | 11.1 | 45 | 125 | 310 | 239 | 69 | 167 | 300 | 26 | F10 | 102 | 4-Φ12 |
| 10 | 250 | 216 | 196 | 159 | 252 | 273 | 268.28 | 19.05 | 12.7 | 45 | 125 | 310 | 239 | 69 | 167 | 300 | 26 | F10 | 102 | 4-Φ12 |
| 12 | 300 | 254 | 226 | 165 | 300.5 | 323.9 | 318.29 | 19.05 | 12.7 | 45 | 125 | 307 | 229 | 73 | 190 | 300 | 28 | F10 | 102 | 4-Φ12 |
| 14 | 377 | 290 | 241 | 178 | 324 | 377 | 371.4 | 23.8 | 12.7 | 45 | 150 | 307 | 229 | 73 | 190 | 300 | 31.7 | F12 | 125 | 4-Φ14 |

Howell reserves the right to alter design specifications without notice.